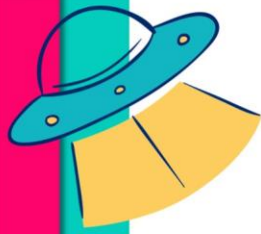




## The word 'PRODUCT' is written in large, white, bold, sans-serif capital letters across the center of the page. Each letter is decorated with a different toy icon: 'P' has a small green plant with two flowers; 'R' has a yellow planet with a ring; 'O' has a yellow planet with a ring; 'D' has a yellow planet with a ring; 'U' has a red paper airplane; 'C' has a yellow planet with a ring; and 'T' has a pink butterfly. The background is composed of vertical stripes in various colors: orange, green, red, light blue, pink, purple, yellow, magenta, and cyan.

CATALOGUE



## BRAND STORY

Since the past 25 years, Toyishland has understood the need of toys for children to encourage imaginative play and ensure safety for the little ones. Decades later, we serve to manufacture toys which are creatively designed, possessing the latest technology and cater mental and physical growth in children.

Toyishland has committed to offer value for money with its toys of premium quality at reasonable prices. We deliver a vast range of toys for children aged between 1 to 8 years. Since 1995, we have pioneered in manufacturing battery operated ride-on cars, swing cars, push cars, slides, storage cabinets and more.

Our aim is to continue the legacy of trust and excitement for your children with the provision of durable and sustainable toys at affordable prices.





RIDE ON  
TOYS



**Age**  
2-6 Years

**Package Size**  
44x24.5x17 (inch)

**Package Weight**  
15.8 (kg)

**12V Battery Operated**  
Ride-on Car

- Dual Operation Mode (Self Drive & Remote control)
- Spacious Seat & Leg Room for Children up to 6-7 Years
- Detailed Chroming
- MP3 (Aux & USB Audio Input)
- Colors: White, Red, Blue & Black
- Lights On/Off Switch
- Smooth & Steady Drive
- Seat Belt For Child's Safety
- Flashing LED Headlights
- Flashing LED Tail Lights
- Swing Function
- Musical Horn
- Mega Phone
- Sporty Look
- Dual Motors
- Key Start



MODEL NO - 702

**HOT RACER**





**Age**  
2-5 Years

**Package Size**  
39.3x13.1x22 (inch)

**Package Weight**  
12 (kg)

**6V Dual Battery**  
Ride-on Car

- Spacious Seat & Leg Room for Children up to 5-6 Years
- Dual Operation (Self Driving & Remote Control)
- Colors Available: White, Red, Black, Blue
- LED Indicators in Side Mirror
- Smooth & Steady Drive
- Seat Belt For Child's Safety
- Detailed Chroming
- Dual Motors
- LED Headlights
- LED Tail Lights
- LED Fog Lamps
- Key Start
- Musical Horn
- Classy Look



MODEL NO - 701

**S-CLASS**





**Age**  
2-6 Years

**Package Size**  
47x23x16 (inch)

**Package Weight**  
17.9 (kg)

**12V Battery Operated**  
Ride-on Car

- Spacious Seat & Leg Room For Children up to 6 - 7 years
- Dual Operation Mode (Self Driving & Remote Control)
- Double Side Opening Doors with Safety Lock
- Colors: Red, White, Black & Blue
- Swing Function For Child's Fun
- Seat Belt for Child's Safety
- Smooth & Steady Drive
- MP3 (Aux & USB Input)
- Wireless Megaphone
- Dual Motors
- Musical Horn
- LED Headlights
- LED Tail Lights
- LED Bumper Light
- Push Start
- Elegant Look
- Detailed Chroming



MODEL NO - 703

**STAR RIDE**







H - 20 inches



L - 44 inches

W - 23 inches



**Age**  
2-5 Years

**Package Size**  
33x17x14.5 (inch)

**Package Weight**  
6.2 (kg)

**6V Battery Operated**  
Heavybike

- MP3 Player (USB & Aux Audio Input)
- Colors: Red, Yellow, Green, Pink, White
- Backward & Forward Option
- Hand Accelerator
- LED Headlamp
- Sporty Design
- Pedal Break



MODEL NO - 402

**MINI DUCATI**





**Age**  
2-5 Years

**Package Size**  
31x13.5x17.8 (inch)

**Package Weight**  
7 (kg)

**6V Battery Operated**  
Ride-on Car

- Battery Operated with Manual Backward & Forward Option
- Colors: Orange, Yellow, Red, Green, Pink, Blue
- Flashing Multicolor LED Lights
- Compact & Sporty Design
- LED Lights in Side Mirror
- Front & Rear LED Lights
- Dual Driving Modes
- Musical Horn



MODEL NO - 700

**COUPE**





H - 17 inches



L - 32 inches

W - 14 inches



**Age**  
3-5 Years

**Package Size**  
27.5x16.1x16 (inch)

**Package Weight**  
6.5 (kg)

**6V Battery Operated**  
Motorcycle

- Colors: Red, Green, Orange, Pink
- Flashing Multicolor LED Lights
- Backward & Forward Option
- MP3 (USB & Aux Audio Input)
- Musical Horn



MODEL NO - 401

**MINI HARLEY**





**Age**  
3-8 Years

**Package Size**  
30.5x14x9.7 (inch)

**Package Weight**  
4 (kg)

**Swing Car/Twister**  
Ride-on Car

- Uses Twist, Turn, Wiggle Movement to Steer Bullet Train
- Available in Multiple Color Combinations: Orange & Black, Green & Black, Pink & Black, Red & Black
- No Batteries, Gears or Pedals
- For Toddlers, Boys and Girls
- With Musical Horn
- Auto Rider



MODEL NO - 611

**BULLET TRAIN**







**Age**  
3-8 Years

**Package Size**  
30.7x13.5x9.5 (inch)

**Package Weight**  
4.2 (kg)

**Swing Car/Twister**  
Ride-on Car

- No Batteries, Gears or Pedals
- Uses Twist, Turn, Wiggle Movement to Steer Orange Train
- Available in Multiple Color Combinations: White & Orange, White & Blue, White & Pink, White & Red
- For Toddlers, Boys & Girls
- With LED Flashing Lights
- With Musical Horn
- Volume Control
- Auto Rider



MODEL NO - 610

**ORANGE TRAIN**





**Age**  
3-8 Years

**Package Size**  
31x12.5x13 (inch)

**Package Weight**  
4.4 (kg)

**Swing Car/Twister**  
Ride-on Car

- Uses Twist, Turn, Wiggle Movement to Steer Dolphin Ride
- Available in Multiple Color Combinations: Red & White, Yellow & White, Orange & White, Pink & White
- No Batteries, Gears or Pedals
- For Toddlers, Boys & Girls
- With Musical Horn
- Auto Rider



MODEL NO - 601

**NEW DOLPHIN RIDE**





**Age**  
3-8 Years

**Package Size**  
31x13x12.1 (inch)

**Package Weight**  
4.10 (kg)

**Swing Car/Twister**  
Ride-on Car

- Uses Twist, Turn, Wiggle Movement to Steer Dolphin Ride
- Available in Multiple Color Combinations: Red & Yellow, Yellow & Red, Orange & Red, Pink & Blue
- No Batteries, Gears or Pedals
- For Toddlers, Boys and Girls
- With Musical Horn
- Auto Rider



MODEL NO - 602

**DOLPHIN RIDE**





W - 14 inches

L - 32 inches

H - 15 inches



**Age**  
3-8 Years

**Package Size**  
31x10.2x13.3 (inch)

**Package Weight**  
3.5 (kg)

**Swing Car/Twister**  
Ride-on Car

- Uses Twist, Turn, Wiggle Movement to Steer Jet Ski Ride
- Available in Multiple Color Combinations: Red & Yellow, Yellow & Red, Orange & Red, Pink & Blue
- No Batteries, Gears or Pedals
- For Toddlers, Boys & Girls
- With Musical Horn
- Auto Rider



MODEL NO - 609

**JET SKI RIDE**







**Age**  
2-4 Years

**Package Size**  
27x13.3x10.74 (inch)

**Package Weight**  
3.3 (kg)

**Manual**  
Ride-on Car

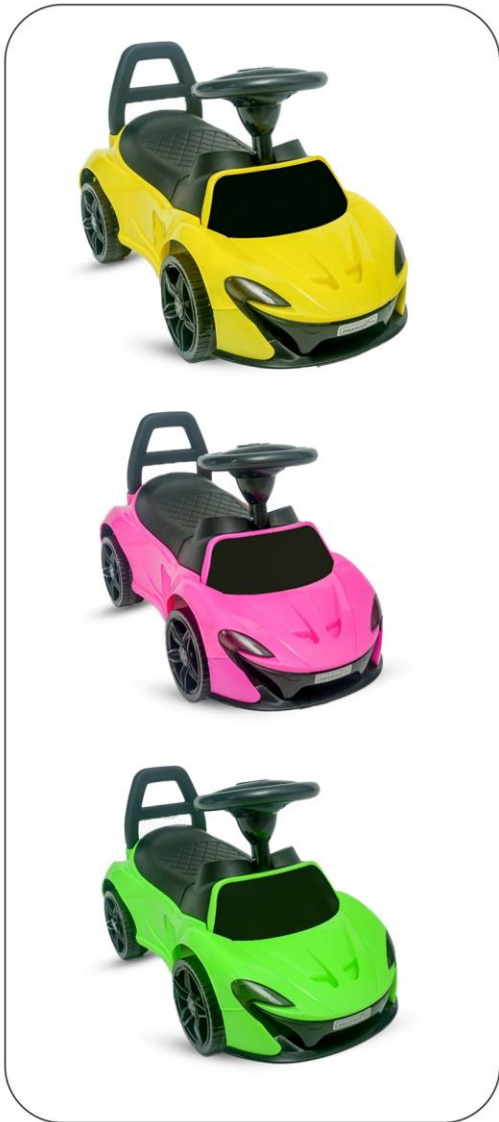
- Low Sitting Ride-on Walking Car with Steering Wheel
- For Babies, Toddlers, Boys & Girls Learning to Walk
- Colors: Red, Yellow & Pink
- Music & Horn Sounds



MODEL NO - 606

**MINI MCLREN**





**Age**  
2-4 Years

**Package Size**  
26x13x12.5 (inch)

**Package Weight**  
3.4 (kg)

**Manual**  
Ride-on Car

- Low Sitting Ride-on Walking Car with Steering Wheel
- Colors: Red & Yellow, Yellow & Red, Orange & Red, Pink & Blue.
- For Babies, Toddlers, Boys & Girls Learning to Walk
- Music & Horn Sounds



MODEL NO - 603

**NEW MINI COOPER**





**Age**  
2-4 Years

**Package Size**  
26.1x12.4x13.1 (inch)

**Package Weight**  
3 (kg)

**Manual**  
Ride-on Car

- Low Sitting Ride on Walking Car with Steering Wheel
- For Babies, Toddlers, Boys & Girls Learning to Walk
- Colors: Red & Yellow, Yellow & Red, Orange & Red, Pink & Blue
- Music & Horn Sounds



MODEL NO - 604

**MINI COOPER**





**Age**  
2-4 Years

**Package Size**  
24.7x13x12.1 (inch)

**Package Weight**  
2.8 (kg)

**Manual**  
Ride-on Car

- Low Sitting Ride-on Walking Car with Steering Wheel
- For Babies, Toddlers, Boys & Girls Learning to Walk
- Colors: Red & Yellow, Yellow & Red,  
Orange & Red, Pink & Blue
- Music & Horn Sounds



MODEL NO - 608

**MINI COOPER JUNIOR**







H - 16 inches



L - 26 inches

W - 12 inches



**Age**  
1-4 Years

**Package Size**  
27.5x13.5x13 (inch)

**Package Weight**  
4.3 (kg)

**Push Car Stroller**  
Ride-on Car

- Detachable Support Handles & Footrest
- With Safety & Support Handles
- Colors: Red, Green, Yellow, Pink
- Converts to Ride-on Car
- With Musical Horn
- Elegant Design
- With Footrest
- Sporty Look



MODEL NO - 607

**SMART STROLLER**





**Age**  
1-4 Years

**Package Size**  
26.2x13.2x13.1 (inch)

**Package Weight**  
4.3 (kg)

**Push Car Stroller**  
Ride-on Car

- Colors: White & Red, White & Green, White & Yellow, White & Pink
- With Safety & Support Handles
- Converts to Ride-on Car
- With Musical Horn
- With Footrest



MODEL NO - 605

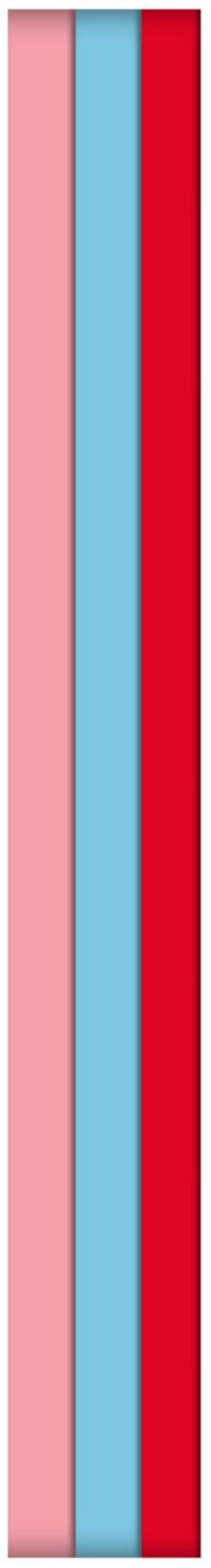
**MINI STROLLER**







# SLIDERS & CLIMBERS



**Age**  
3-7 Years

**Package Size**  
78.5x22.5x15.3 (inch)

**Package Weight**  
12.7 (kg)

**Ladder**  
4 Step

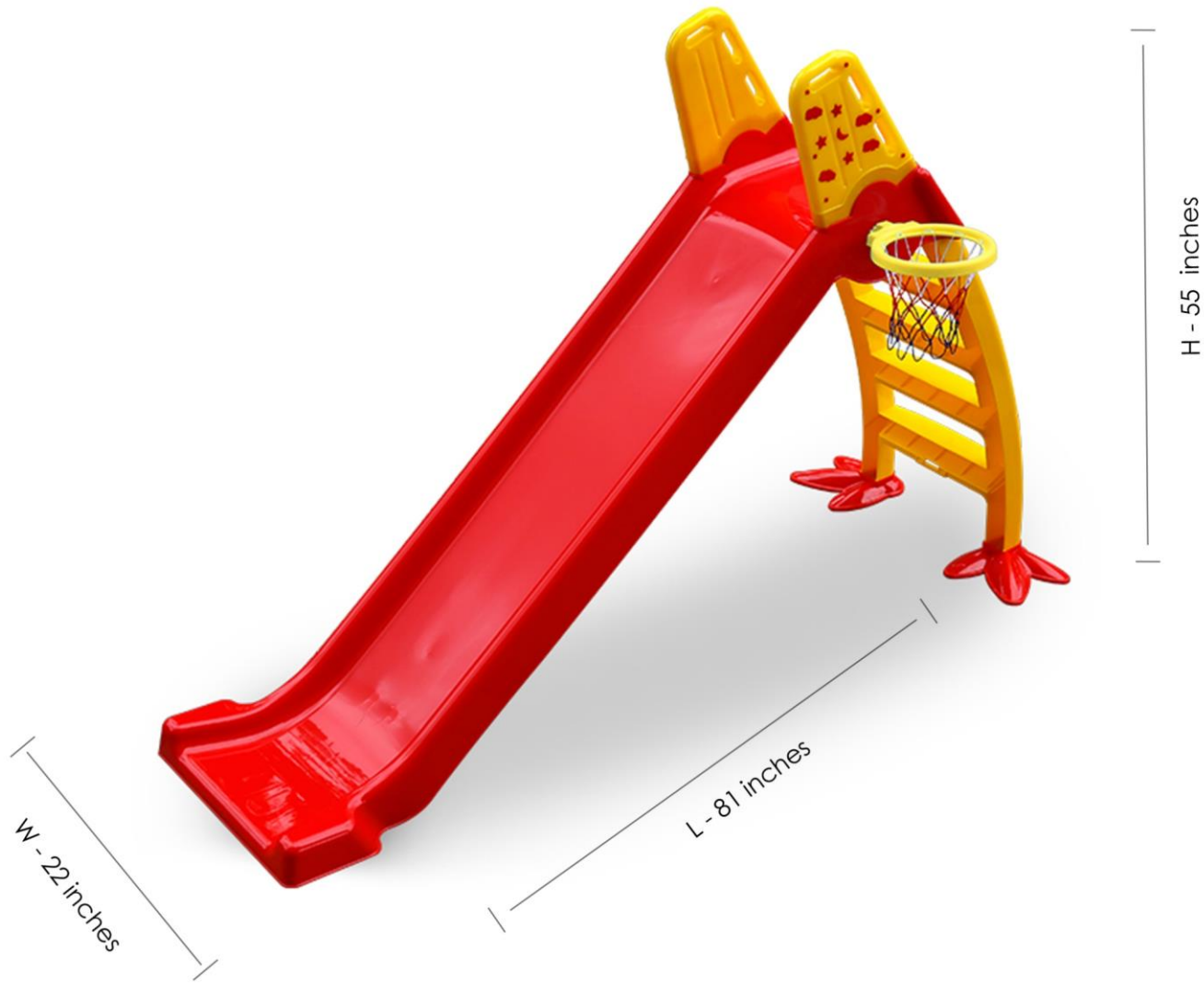
- Strong & Steady Design For Maximum Child Safety
- Side Handles For Child Fall Protection
- Safety Belt and Rubber Pads for Maximum Stability During Play
- Full of Fun Active Play for Children
- Colors: Red & Yellow
- Basket Ball Play
- 120 cm Height



MODEL NO - 503

**JUMBO SLIDE**







**Age**  
2-5 Years

**Package Size**  
51x21.3x15.3 (inch)

**Package Weight**  
8.6 (kg)

**Ladder**  
3 Step

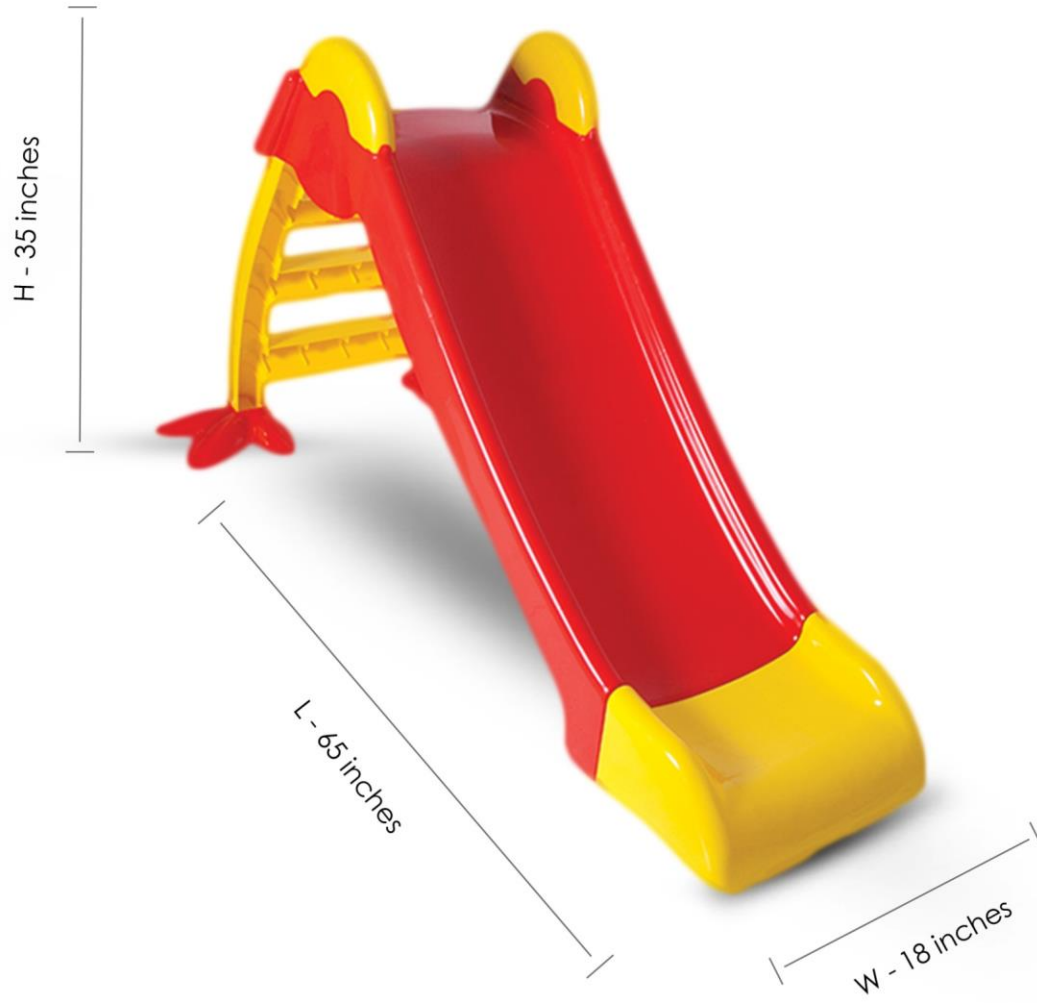
- Strong & Steady Design For Maximum Child Safety
- Full of Fun Active Play for Children
- Colors: Red & Yellow
- 90 cm Height



MODEL NO - 502

**LARGE SLIDE**





**Age**  
2-5 Years

**Package Size**  
54x20.1x10 (inch)

**Package Weight**  
6.63 (kg)

**Ladder**  
2 Step

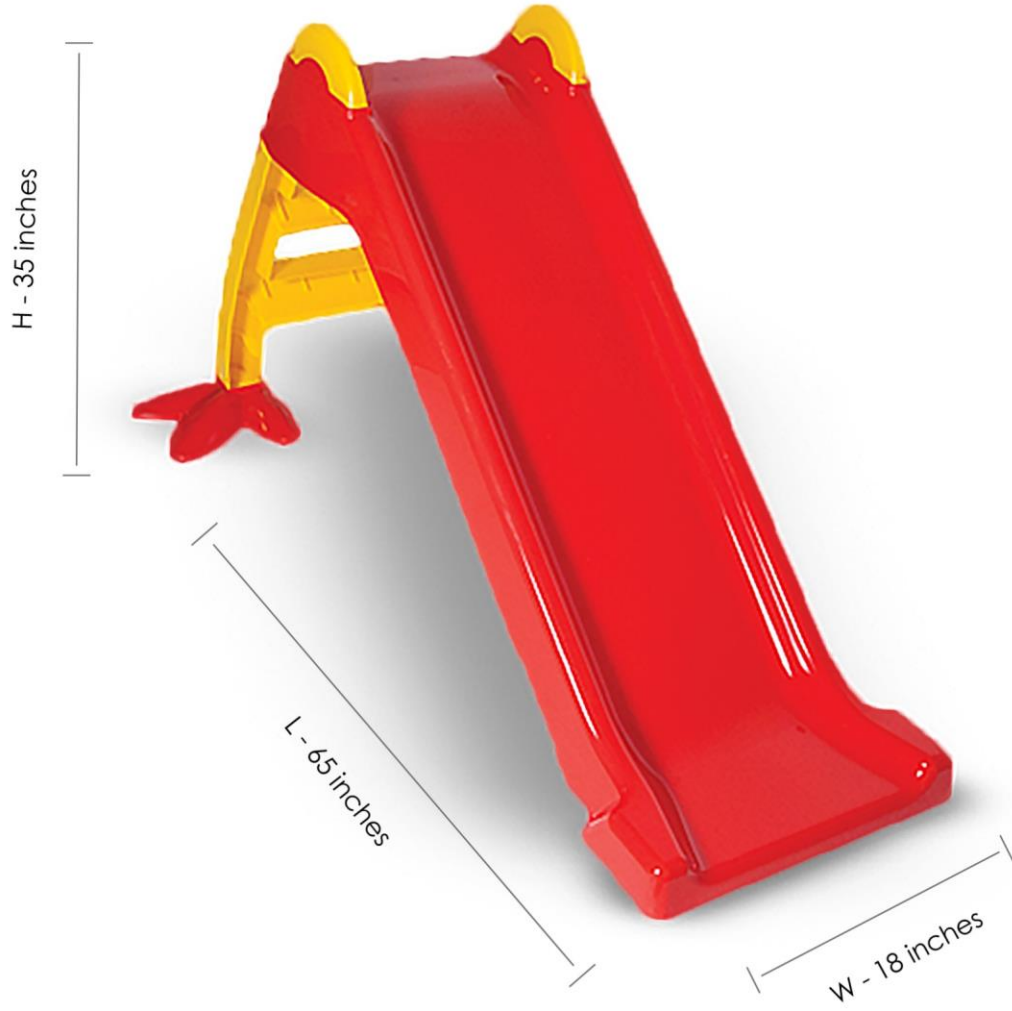
- Strong & Steady Design For Maximum Child Safety
- Full of Fun Active Play for Children
- Colors: Red & Yellow
- 70 cm Height



MODEL NO - 501

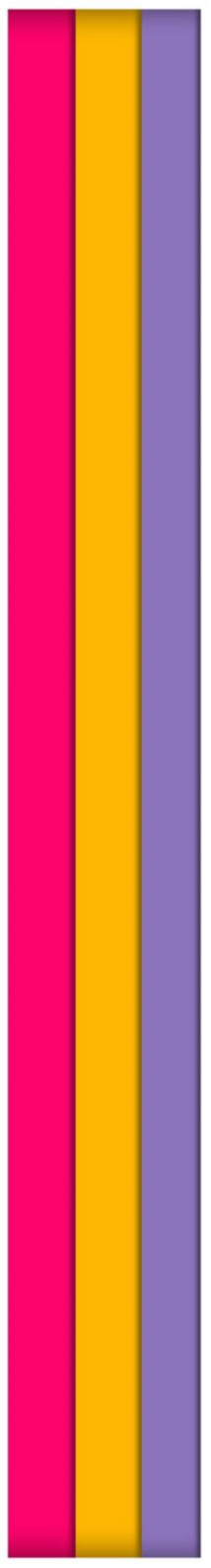
**MEDIUM SLIDE**







# FURNITURE



**Age**  
For All Ages

**Package Size**  
29.5x25.5x20.2 (inch)

**Package Weight**  
22.1 (kg)

**4+2**  
Combination

- Drawers With Channel Guide
- Lock and Key in Small Drawers
- Storage Drawer
- With Base Wheels
- Easy to Assemble
- Portable Design
- Steady Frame



MODEL NO - 901

**STORAGE DRAWER**

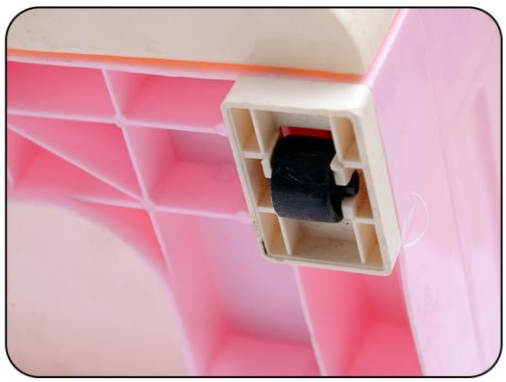




H - 52 inches

W - 18 inches

L - 25 inches



**Age**  
For All Ages

**Package Size**  
15x19x24 (inch)

**Package Weight**  
6.3 (kg)

**Multi-Purpose**  
Study Table

- Mobile & Tablet Holding Space for Online Classes
- Bigger Size for Comfortable Working Position & Protects Your Child's Back from Injury
- Bigger Size Makes it a Suitable Study Table for Adults
- 5 Eye-catching Colors: Red, Blue, Orange, Pink, Yellow
- Dimensions: 10" Height | 14" Length | 24" Width
- Multi Purpose Usage: Kids Online Classes
- Strong & Steady Design for Durability
- Adults Working Desk
- Kids Playing Desk



MODEL NO - 301

**HOME SCHOOL DESK**









WWW.TOYISHLAND.COM



TOYISHLAND



+92 301 1989998



INFO@TOYISHLAND.COM

